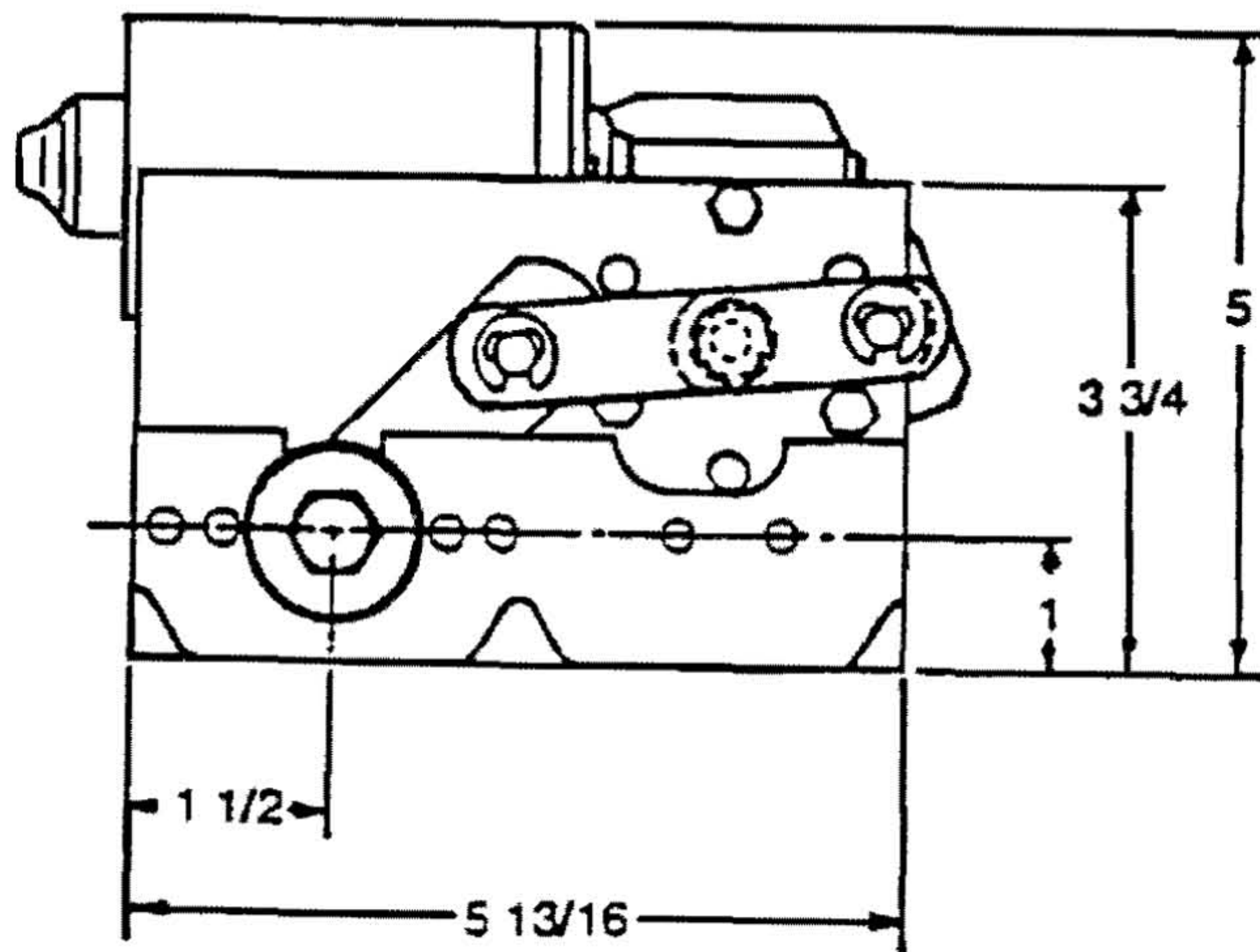
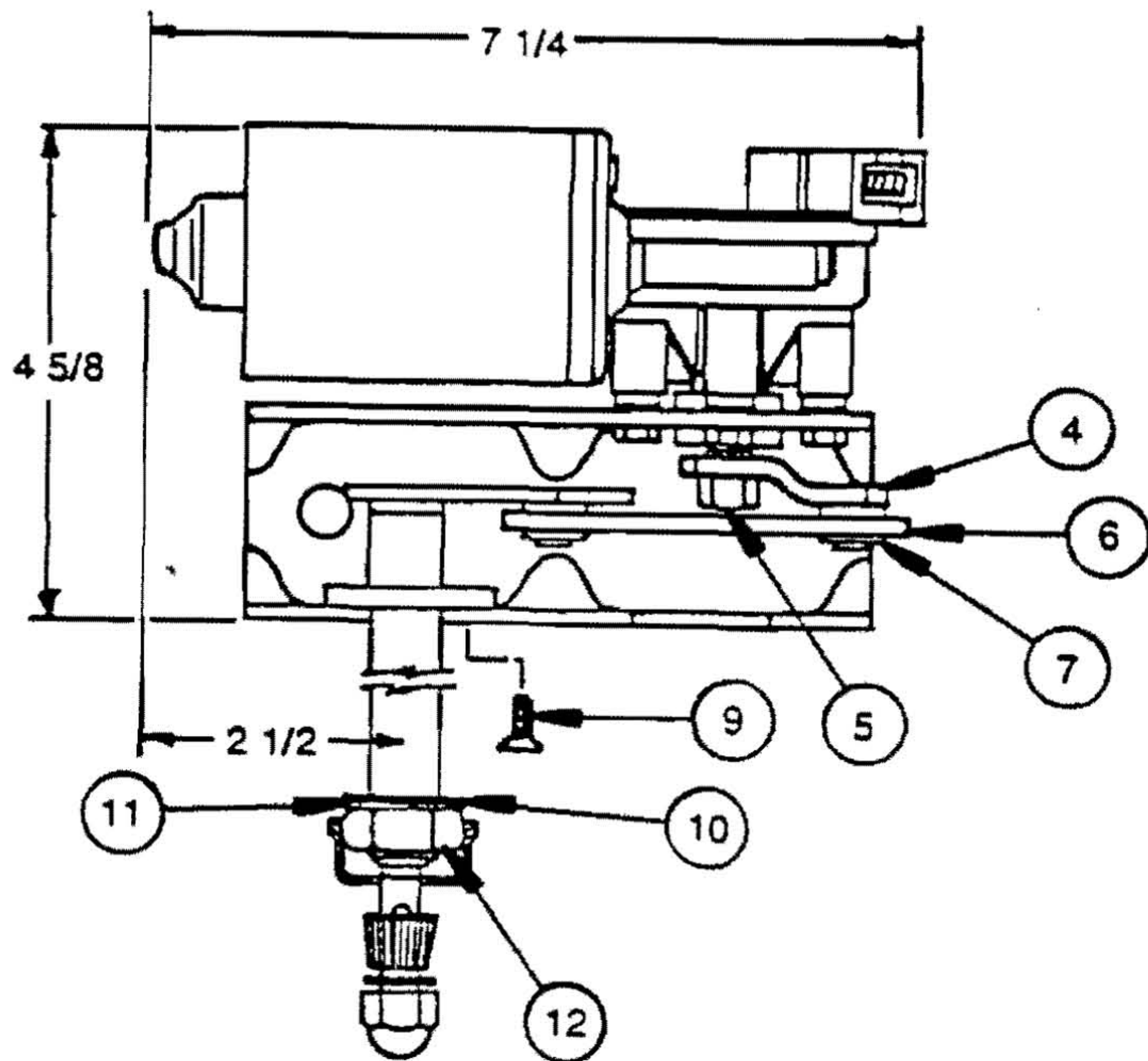
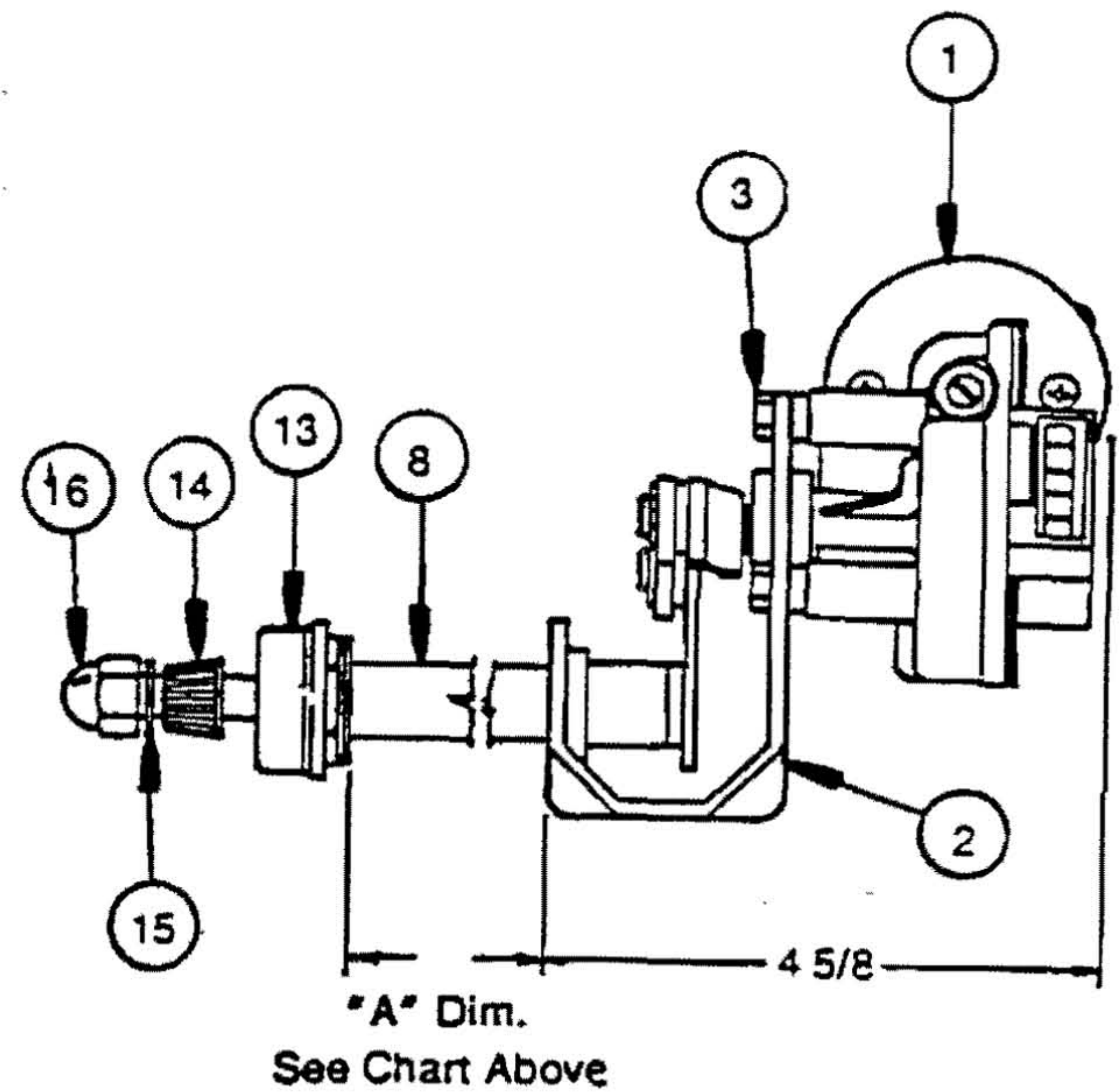


Universal Electric System



Standard Pivot Body Lengths	"A" Dim. (Min./Max) Body Thru Skin Thickness
.75	0.00 Min./1.25 Max.
1.0	.125 Min./1.500 Max.
1.5	.500 Min./1.00 Max.
2.0	1.00 Min./1.50 Max.
2.5	1.50 Min./2.00 Max.
3.0	2.00 Min./2.50 Max.

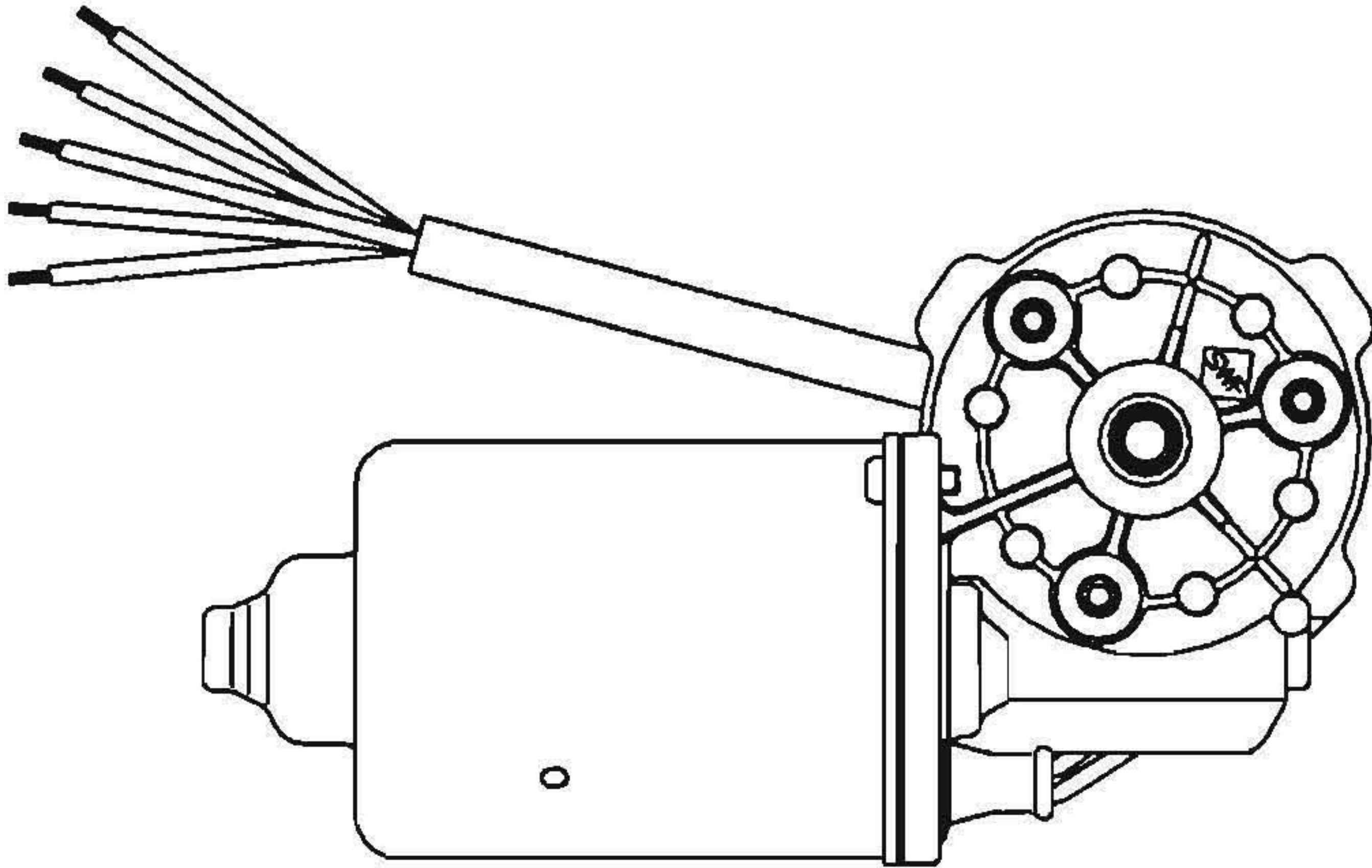


Item	Part Name	Part Number	Req.
1	Elec. Motor Assy.	See Chart	1
2	Mounting Bracket	See Chart	1
3	Hex Head Screw	C-1542	3
4	Motor Crank	GS-2294	1
5	Flanged Locknut	C-1546	1
6	Conlink Assy.	See Chart	1
7	Retaining Ring	C-1549	2
8	Idler Shaft/Housing Assy	See Chart	1

Item	Part Name	Part Number	Req.
9	Self Tapping Screw	C-2034	2
10	Gasket Washer	S-3116	1
11	Flat Washer	S-929	1
12	Hex Nut	S-2757	1
13	Weather Seal Cap	S-2756	1
14	Arm Driver	S-2280-1	1
15	Lockwasher	C-1423	1
16	Acorn Nut	See Chart	1

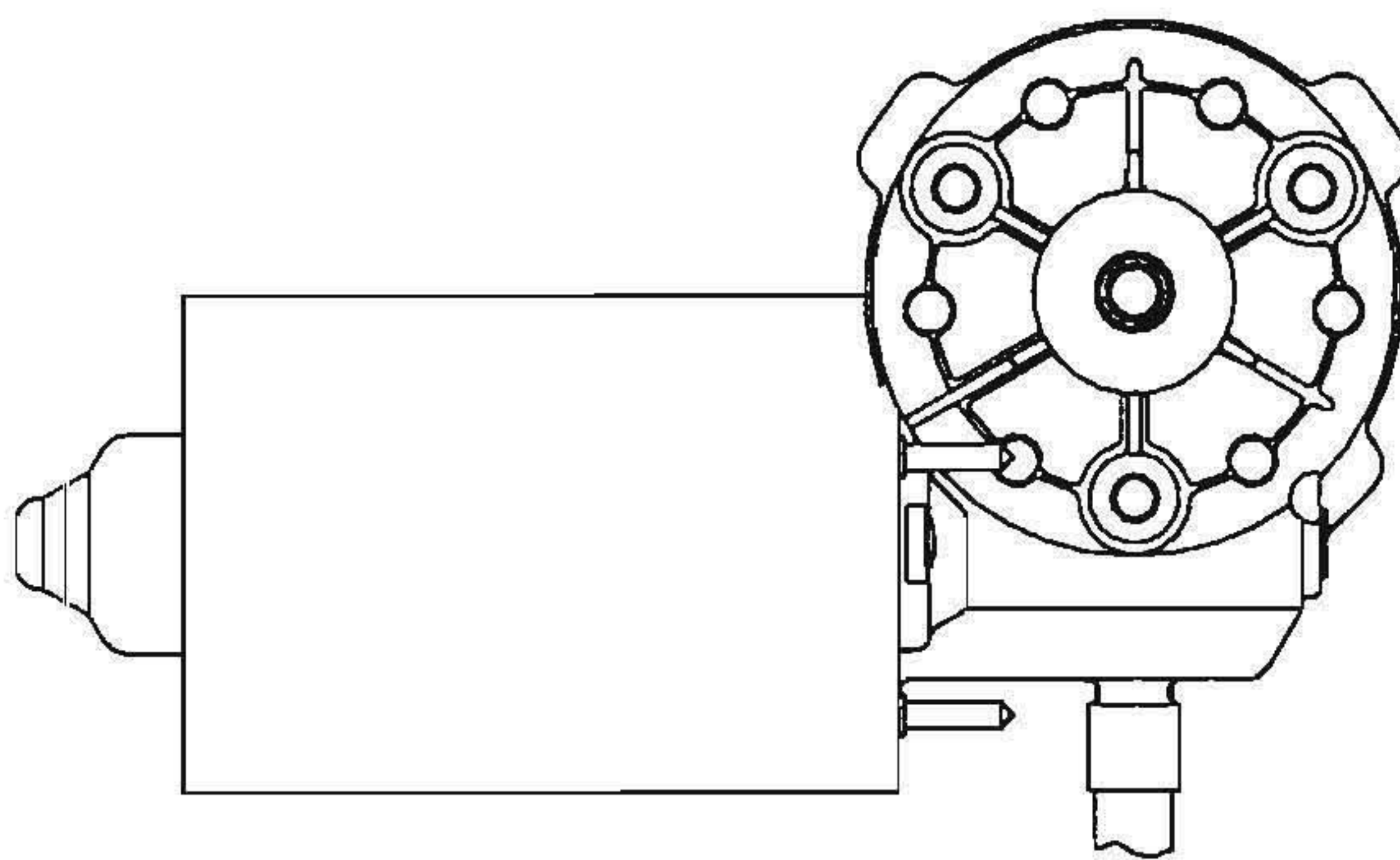
**ELECTRIC MOTOR IDENTIFICATION
AND POSSIBLE REPLACEMENTS**

CORPORATE "K" 28 Nm WIPER MOTOR



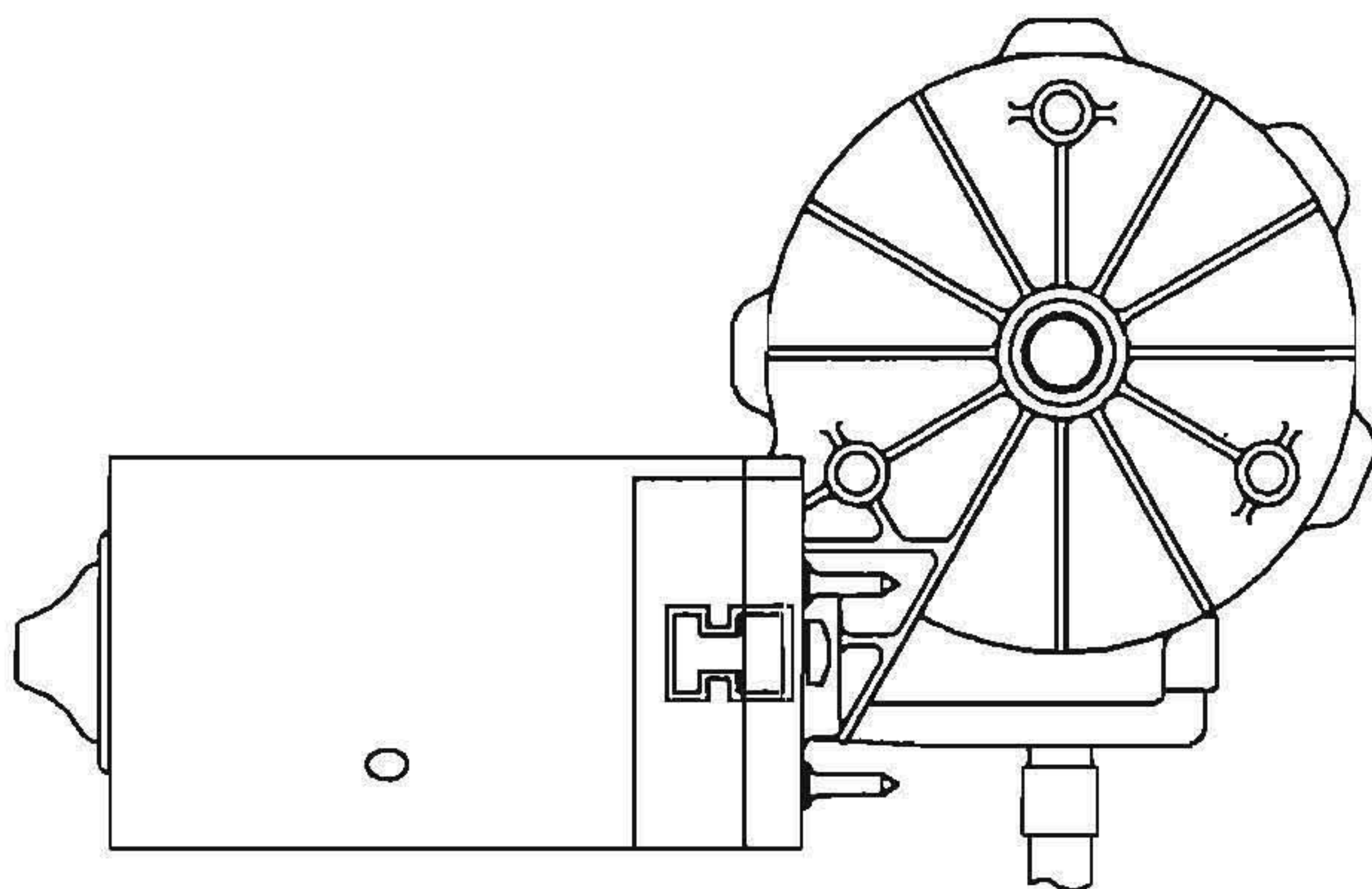
AVAILABLE IN 12V OR 24V

SWMK 28 Nm WIPER MOTOR



AVAILABLE IN 12V OR 24V

SWML 44 Nm WIPER MOTOR



AVAILABLE IN 12V OR 24V